

SYMFOR (Silviculture and Yield Management For Tropical Forests) project 1997 - 2002

The SYMFOR research project, supported by the UK Department For International Development (DFID) Forestry Research Programme (FRP) since 1997, has developed a software framework for models of forest ecology and management. It has been used to improve growth estimation and yield prediction for tropical timber resources and thus provide a tool to assist forest management decision and forest policy. Originally designed for tropical moist forest in East Kalimantan, Indonesia, the SYMFOR framework has been extended and developed over the past few years such that it now includes 7 models representing forests in 5 tropical countries developed by 7 research institutions. The diagram overleaf summarises the progress of the SYMFOR research project. In addition to this, SYMFOR is being used in Guyana, Bolivia and Ecuador.

While SYMFOR goes from strength to strength, the research project that developed it is coming to an end. This newsletter is to update you with a brief overview of its achievements, the development SYMFOR has undergone during the project lifetime, recent publications, and what activities/initiatives are planned for the future. We feel that SYMFOR development has achieved critical mass, and can continue to stand and be developed and applied without the full-time support of a research project. Many aspects of the project will continue to be maintained from Edinburgh, such as user-support and the website, while we, our friends and our partners continue to use SYMFOR to enhance forest knowledge in the tropics.

Collaboration with international partners has underpinned the success of SYMFOR throughout the project, and will remain the cornerstone of productive partnership. We would like to thank all our collaborators for their inputs specifically to the research project, and look forward to strengthening our partnerships for a successful future.

Reports from multi-stakeholder workshops in Indonesia available

In the previous issue we reported on the workshops held in Jakarta and East Kalimantan in February last year. Our partners in Indonesia presented technical results from yield regulation pilot studies to diverse groups of local stakeholders to raise awareness of yield regulation issues, stimulate debate and obtain feedback on the need for additional research and policy support. Their reports (in Indonesian) including the English translations are available for download from our website, <http://www.symfor.org/workshops/>

New Technical Notes on SYMFOR website

A number of new Technical Notes (No. 11-14) relating to the development of the model are available for download from <http://www.symfor.org/technical/>

SYMFOR project outputs

All outputs from the SYMFOR project are available from our website. If you have difficulty in downloading the documents, please email Support@symfor.org with your details and postal address for a copy by post.

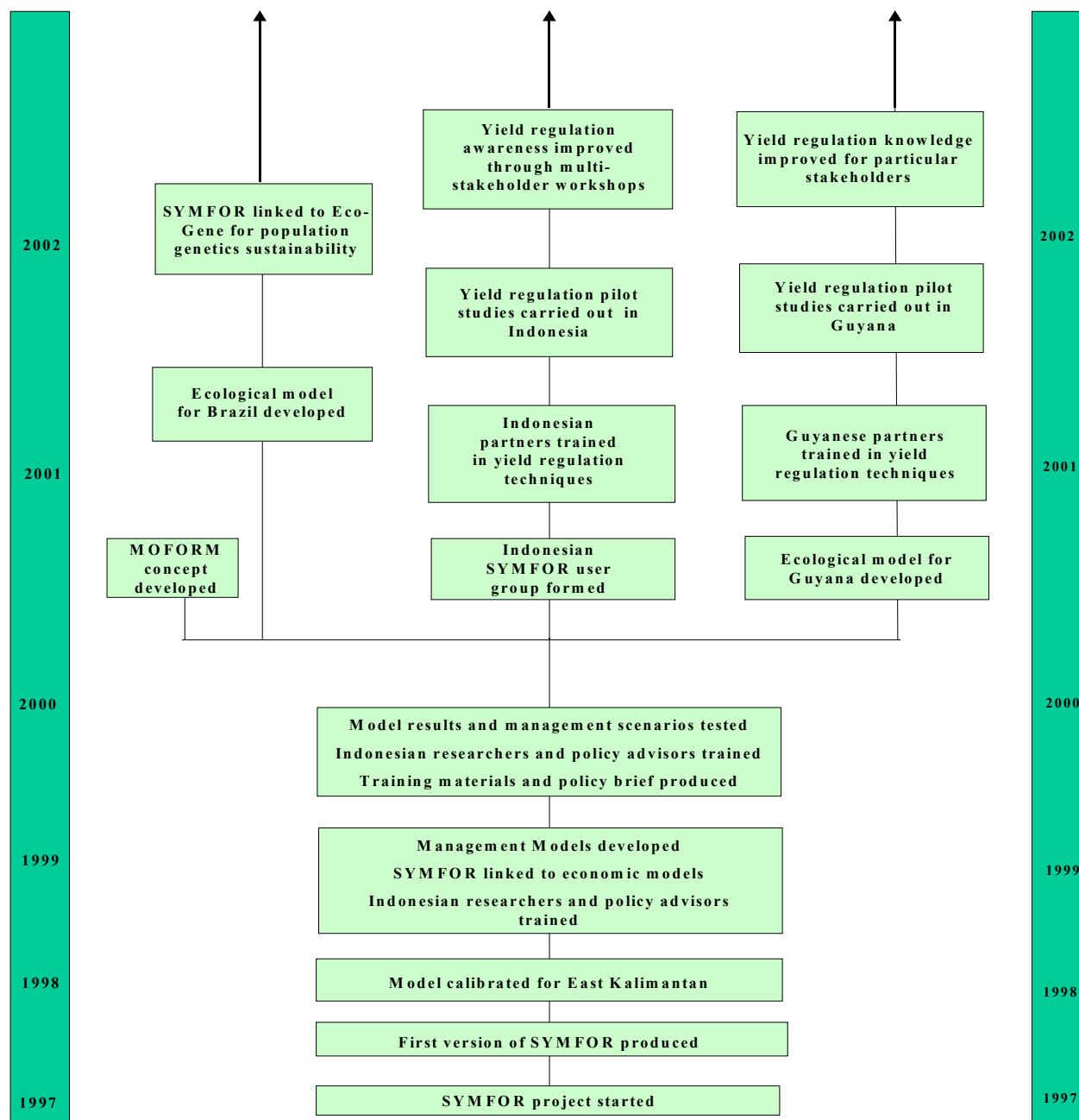
Contact the SYMFOR team:

SYMFOR,
Centre for the Study of Environmental Change and Sustainability (CECS)
The University of Edinburgh,
John Muir Building, Mayfield Road,
Edinburgh,
EH9 3JK, UK.
Tel: +44 131 650 7862
Fax: +44 131 650 7863

General enquiries	Support@symfor.org
Dr Paul van Gardingen	p.vangardingen@ed.ac.uk
Dr Paul Phillips	paul.phillips@symfor.org
Ms Stefanie Halfmann	stefanie.halfmann@ed.ac.uk

Visit our web site <http://www.symfor.org> for more information on SYMFOR and for a free copy of the software.

SYMFOR



SYMFOR beyond 2002

Opportunities for the application of SYMFOR to improve knowledge supporting forest management knowledge are being taken forward by our partners, as originally intended. In Brazil, EMBRAPA Amazonia Oriental and the Dendrogene project are supporting the application of SYMFOR to help evaluate forest management plans. In Guyana, the University of Utrecht and Tropenbos are developing detailed models in SYMFOR of tree recruitment processes. In Bolivia,

SYMFOR is being used to understand the effects of fire, management and silviculture, by the University of Florida and BOLFOR. In Ecuador, Jatun Sacha are applying SYMFOR to evaluate farm-forest strategies.

The EU 6th Framework Programme for research and the Europaid Eco-Pro-Asia Programme may present opportunities as well. The ATB meeting in Aberdeen, 7-10 July 2003, will host a SYMFOR symposium to discuss modelling and simulation with SYMFOR, worldwide.